



, ... : AM ET



1

Honolulu, Hawaii

2004 899,600

Pop.:

Tornado	Hurricane	Quake	Wind	Hail	Brush fires	Extreme weather
0	3	3	0	0	0	7

Total* 12

* The lower the total, the safer a place is and vice versa. Click [here](#) to read more about the methodology in our introduction.



2

Boise City, Idaho

2004 490,600

Pop.:

Tornado	Hurricane	Quake	Wind	Hail	Brush fires	Extreme weather
4	0	10	0	0	0	22

Total* 36

* The lower the total, the safer a place is and vice versa. Click [here](#) to read more about the methodology in our introduction.



3

Santa Fe, N.M.

2004 157,500

Pop.:

Tornado	Hurricane	Quake	Wind	Hail	Brush fires	Extreme weather
3	0	16	1	1	0	17

Total* 38

* The lower the total, the safer a place is and vice versa. Click [here](#) to read more about the methodology in our introduction.



4

Yakima, Wash.

2004 229,100
Pop.:

Tornado	Hurricane	Quake	Wind	Hail	Brush fires	Extreme weather
0	0	15	0	0	0	25

Total* 40

* The lower the total, the safer a place is and vice versa. Click [here](#) to read more about the methodology in our introduction.



5

Spokane, Wash.

2004 435,600
Pop.:

Tornado	Hurricane	Quake	Wind	Hail	Brush fires	Extreme weather
0	0	10	0	0	0	33

Total* 43

* The lower the total, the safer a place is and vice versa. Click [here](#) to read more about the methodology in our introduction.



6

Richland-Kennewick-Pasco, Wash.

2004 215,500
Pop.:

Tornado	Hurricane	Quake	Wind	Hail	Brush fires	Extreme weather
0	0	18	1	0	0	26

Total* 44

* The lower the total, the safer a place is and vice versa. Click [here](#) to read more about the methodology in our introduction.



7

Medford-Ashland, Ore.

2004 193,000
Pop.:

Tornado	Hurricane	Quake	Wind	Hail	Brush fires	Extreme weather
0	0	21	2	1	0	21

Total* 45

* The lower the total, the safer a place is and vice versa. Click [here](#) to read more about the methodology in our introduction.



8

Corvallis, Ore.

2004 79,400

Pop.:

Tornado	Hurricane	Quake	Wind	Hail	Brush fires	Extreme weather
1	0	28	0	0	0	17

Total* 46

* The lower the total, the safer a place is and vice versa. Click [here](#) to read more about the methodology in our introduction.



9

Salem, Ore.

2004 369,400

Pop.:

Tornado	Hurricane	Quake	Wind	Hail	Brush fires	Extreme weather
2	0	27	0	0	0	18

Total* 47

* The lower the total, the safer a place is and vice versa. Click [here](#) to read more about the methodology in our introduction.



10

Las Cruces, N.M.

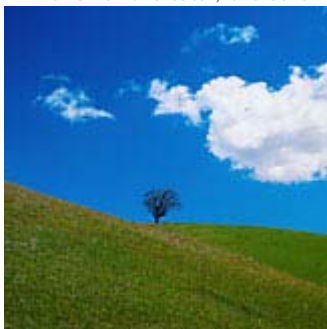
2004 186,100

Pop.:

Tornado	Hurricane	Quake	Wind	Hail	Brush fires	Extreme weather
1	2	11	0	0	0	34

Total* 48

* The lower the total, the safer a place is and vice versa. Click [here](#) to read more about the methodology in our introduction.



- [Back to first slide](#)
- [Intro](#)
- [Print this story](#)
- [Forbes.com/Lifestyle](#)
- [Lifestyle Newsletter](#)
- [Close this window](#)

[Least Safe Places](#)

[Largest Metro Area Rankings](#)